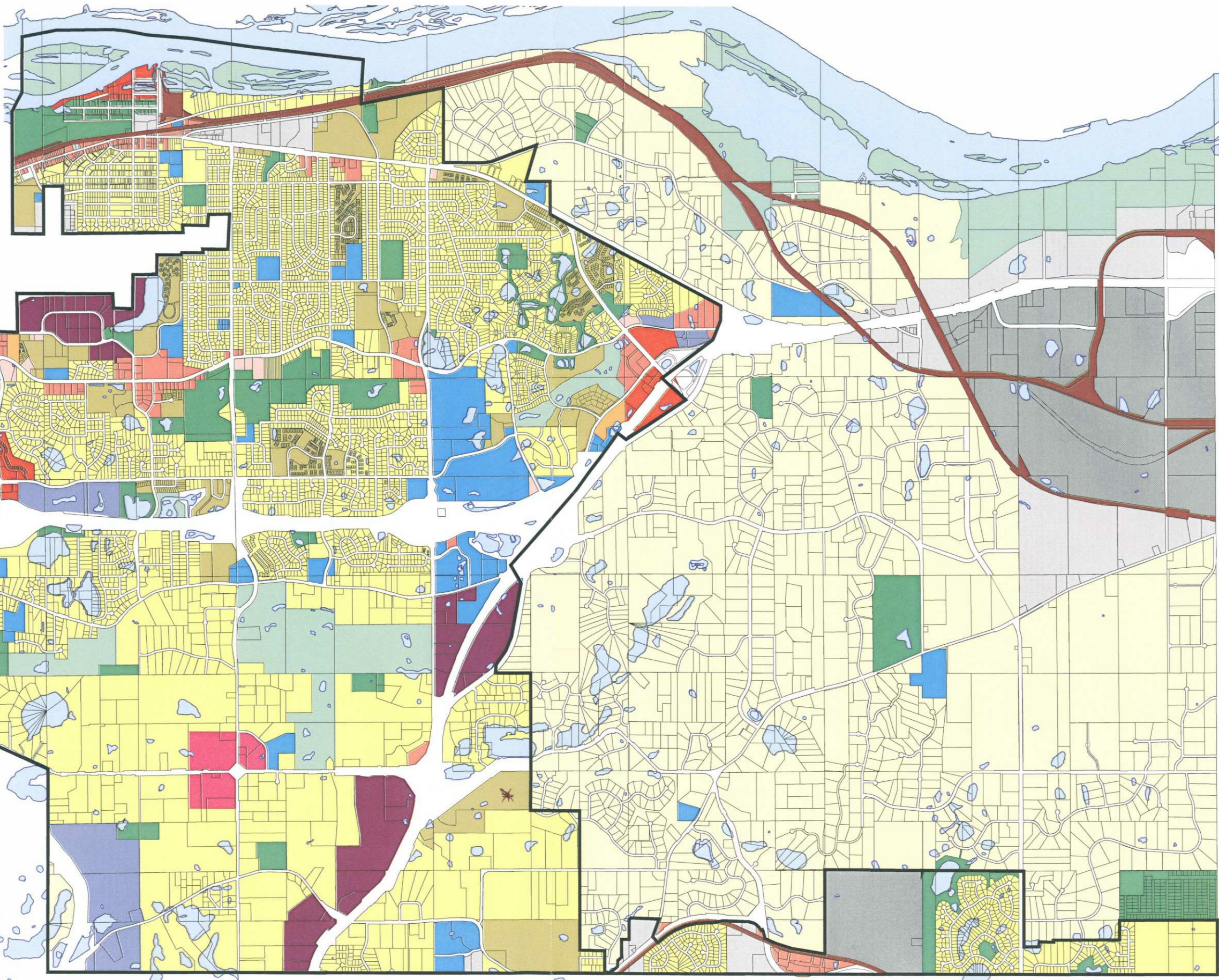




City of Inver Grove Heights Future Land Use Map

Updated May 2005



Future Land Use Classes

- | | | | | |
|----------------------------|-------------------------|------------------------|----------------------|----------|
| Rural Density Residential | Office | Mixed Use | Public/Institutional | Railroad |
| Low Density Residential | Neighborhood Commercial | Industrial Office Park | Park | ROW |
| Medium Density Residential | Community Commercial | Light Industrial | Special Use | Lake |
| High Density Residential | Regional Commercial | General Industrial | MUSA limits | |